

SECURA®

AUTOMATIC MILK FROTHER AND HOT CHOCOLATE MAKER

Model: F280R



Welcome to the Secura Family!

Congratulations on being the proud owner of your new Secura product. We believe in manufacturing only the highest quality kitchen, home and personal care products for our customers. We are a U.S.-based manufacturer and all our products meet strict standards for manufacturing, safety and performance.

We also believe in providing the best customer service and support in the industry. That is why we provide a two-year warranty that ensures your satisfaction - so you can enjoy your new Secura product for many years to come!

If you have questions or need assistance, please email CustomerCare@thesecura.com. For fastest response, please include product name and model #, proof of original purchase, complete contact information, and detailed information about the issue, including pictures when applicable.

Your feedback and suggestions are also important to us, so please email them to us at CustomerCare@thesecura.com.

The Secura Team

SECURA®

Copyright 2018 Secura, Inc. All rights reserved.

The material in this publication is protected under International and Federal Copyright Laws and Treaties, and as such, any unauthorized reprint or use of this material is strictly prohibited.

No part of this book may be reproduced or transmitted in any form without the written permission of the author, except for the inclusion of brief quotations in a review.

Reproduction or translation of any part of this work without the permission of the copyright holder is against the law.

TABLE OF CONTENTS

GENERAL SAFETY INSTRUCTIONS	1
PARTS LIST	4
HOW TO USE	5
CLEANING AND MAINTENANCE	7
TROUBLESHOOTING GUIDE	8
SPECIFICATIONS	9
DISPOSAL	10
CONTACT	10
MANUFACTURER'S LIMITED WARRANTY	11

AUTOMATIC MILK FROTHER AND HOT CHOCOLATE MAKER



To reduce the risk of fire, injury or electrical shock along with extending the life of your electrical appliances, please read and follow all of the information in this manual before using and save it for future reference.

GENERAL SAFETY INSTRUCTIONS

Before any use of the Secura Milk Frother, it is vital that you read all parts of this manual, including safety details and product instructions. When you follow the safety instructions, you will be able to avoid the risk of electric shock, fire, or injury to yourself and others. Be sure to store this manual so that you will be able to reference it in the future.

When using any electrical appliance, be sure to follow precautions to ensure your safety.

- Please confirm that the voltage of the electrical outlet corresponds to the required voltage of the milk frother and ensure that the outlet is grounded.
- **WARNING!** Never immerse the power base and the plug in any liquids including water. Electrical connections should never be exposed to water to avoid the risk of electric shock or electrical fire. Never operate the appliance with wet hands.
- Do not use of an extension cord with this electrical appliance.
- Be sure to keep the electrical cord off of the ground to avoid trips and falls.
- Do not damage the cord with sharp edges or heat. In order to avoid damage, do not bend, crush or strain the cord.
- Before use of the appliance, be sure to unwind the power cord and ensure that the cord has no kinks or crimps.
- If the power cord or the plug has become damaged, do not operate the appliance and avoid touching it.
- Contact CustomerCare@thesecura.com for assistance if the appliance has become damaged.
- After each use, unplug the appliance and only clean the appliance after unplugging from the electrical outlet.
- To disconnect the appliance, be sure to turn off the power and then gently pull the plug from the electrical outlet. Do not unplug by pulling on the cord itself.
- This is not a commercial appliance. It should only be used for household purposes and should only be used in indoor conditions.
- The purpose of this appliance is for frothing and/or heating plain milk and chocolate milk. It

should not be used for any other purpose.

- This appliance should only be used by adults. It should not be used by anyone with reduced mental or physical capacity. At all times, the use of the appliance should be supervised by someone with full experience and knowledge of using electrical appliances.
- Children should not be allowed to play with or near the milk frother. Whisks present a choking hazard for babies and small children.
- Do not use any third-party accessories or attachments as they may cause fire, electric shock or injury.
- Improper handling or setup of this appliance could risk personal injury from electric shock as well as fire. Any damage or injury from improper use of the appliance will void your warranty.
- The appliance should only be used on flat, even surfaces.
- Use of this appliance on wood surfaces of any type could result in the damage of that surface.
- Never operate the appliance without the minimum quantity of milk.
- The power cord is intended for this appliance only and should not be used with any other appliance.
- Only fill the milk jug to the appropriate fill level. Do not overfill and do not operate without at least the minimum level of liquid in the jug.
- To avoid injury, do not touch any moving parts within the frother.
- **WARNING!** Never leave the appliance on and unattended. When not in use, ensure that the appliance is switched off and unplugged.

WARNING!

DO NOT submerge power base under water or put in dishwasher.

AUTOMATIC MILK FROTHER AND HOT CHOCOLATE MAKER

 **WARNING:**
CHOKING HAZARD - Small Parts.
Not for Children under 3 years old.



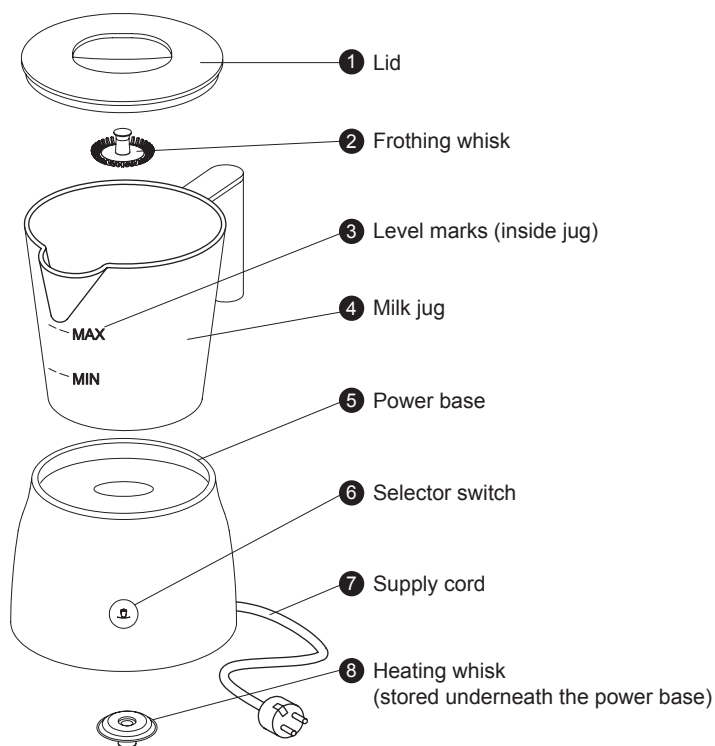
Always follow basic safety precautions when using any electrical products, especially when children are present.



CAUTION: HOT SURFACES - This appliance generates heat during use. Proper precautions must be taken to prevent the risk of burns, fires or other injury to persons or damage to property.

FOR PERSONAL USE ONLY
SAVE THESE INSTRUCTIONS

PARTS LIST



AUTOMATIC MILK FROTHER AND HOT CHOCOLATE MAKER

HOW TO USE

Operation - Frothing and/or heating plain milk

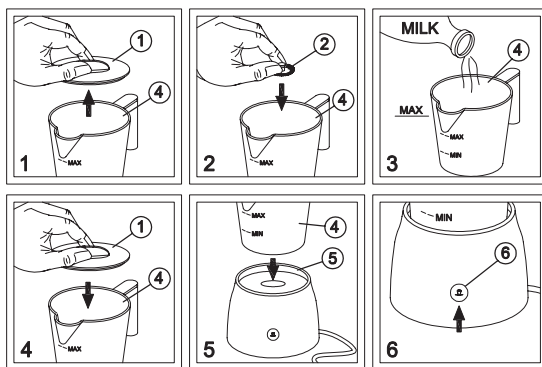


Fig. 1 Open the lid of the appliance.

Fig. 2 Insert the correct whisk into the axle in the bottom of the milk jug.

Fig. 3 Add milk into the milk jug. Do not add more milk than the maximum line (250 ml), which is marked inside the milk jug. Milk will expand as it turns into froth.

Fig. 4 Place the lid on top of the milk jug.

Fig. 5 Put the milk jug onto the power base and plug the appliance into the electrical outlet.

Fig. 6 Press the selector switch as indicated below:

1) Heating only (use heating whisk)

Press the selector switch once. The indicator light will illuminate red and flash about 3 seconds. After 3 seconds, the indicator light will stop flashing and the appliance will begin to operate. The cycle will take 60 to 240 seconds, depending on the starting temperature and amount of the milk. The indicator light and the appliance will turn off automatically when the cycle is complete, indicating the heated milk is ready.

2) Heating and frothing (use frothing whisk)

Press the selector switch once. The indicator light will illuminate red and flash about 3 seconds. After 3 seconds, the indicator light will stop flashing and the appliance will begin to operate. The cycle will take 60 to 240 seconds, depending on the starting temperature and amount of the milk. The indicator light and the appliance will turn off automatically when the cycle is complete, indicating the heated and frothed milk is ready.

3) Frothing milk without heat (use frothing whisk)

Press the selector switch three times. The indicator light will illuminate blue and flash about 3 seconds. After 3 seconds, the indicator light will stop flashing and the appliance will begin to operate. The cycle will take 60 to 240 seconds, depending on the starting temperature and amount of the milk. The indicator light and the appliance will turn off automatically when the cycle is complete, indicating the frothed milk is ready.

Operation - Heating chocolate milk (will produce a small amount of froth)

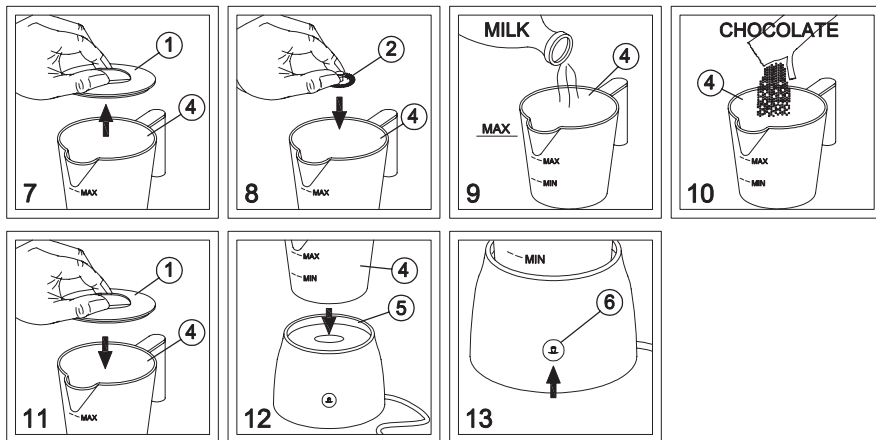


Fig. 7 Open the lid of the appliance.

Fig. 8 Insert the frothing whisk into the axle in the milk jug.

Fig. 9 Add milk into the milk jug. Do not add more milk than the maximum line (250 ml), which is marked inside the milk jug.

Fig. 10 Add no more than 50 g chocolate/cocoa powder into the milk jug.

(**Note:** The ratio of the chocolate/cocoa to the milk is 1 : 4. This means when you add 50 g chocolate, you should add 200- 250 ml milk).

Fig. 11 Place the lid on top of the milk jug.

Fig. 12 Put the milk jug onto the power base and plug the appliance into the electrical outlet.

Fig. 13 Press the selector switch twice, the indicator light will illuminate white and flash about 3 seconds. After 3 seconds, the indicator light will stop flashing and the appliance will begin to operate. The cycle will take 300 to 420 seconds, depending on the starting temperature and amount of the milk and chocolate/cocoa. The indicator light and the appliance will turn off automatically when the cycle is complete, indicating the heated chocolate milk is ready.

Note: If the frothing whisk becomes stuck by the chocolate powder during operation, it will resume normal operation automatically in 2 seconds.

OVERHEATING AND SAFETY SHUT-OFF

If there is no liquid in the jug, or no jug on the power base, a safety shut-off will automatically disconnect the power supply should the heating plate overheat. This safety mechanism can protect the milk frother from being damaged by overheating.

AUTOMATIC MILK FROTHER AND HOT CHOCOLATE MAKER

CLEANING AND MAINTENANCE

Always remove the jug from the power base before you begin to clean it. Do not immerse the power base in water or in a dishwasher. Allow the appliance to cool thoroughly before cleaning, putting in or taking off parts.

- **Lid:** The lid is dishwasher safe. Wash it with warm soapy water or in the top rack of the dishwasher.
- **Milk jug:** Flush and clean the jug with warm soapy water and a non-abrasive cloth or place it in the top rack of the dishwasher. Wipe dry with a soft cloth.
- **Power base:** Use a soft and moist cloth or non-abrasive sponge to wipe it clean. Dry with a clean cloth. NEVER immerse it into liquid or clean in the dishwasher.
- **Whisk:** Remove the whisk from the jug and wash it in warm soapy water. Be sure to dry thoroughly before storage.

NOTE: Never use any sharp or hard cleaning agents to clean the heating plate for it may cause scratching.

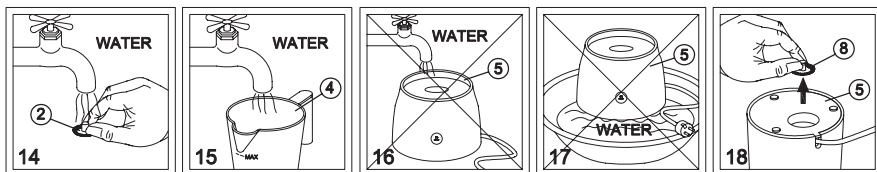


Fig. 14 Remove the whisk from the jug and wash it with running water.

Fig. 15 Pour enough water into the jug and use a soft cloth or brush to clean it.

Fig. 16 DO NOT flush the power base directly with water or any other liquid.

Fig. 17 DO NOT immerse the power base into the water or any other liquid.

Fig. 18 Please store the heating whisk in the base when not in use.

TROUBLESHOOTING GUIDE

If after reviewing the troubleshooting guide, the problem is not resolved, do not attempt to repair or disassemble the unit yourself. Please contact us at CustomerCare@thesecura.com for assistance.

Problem	Possible Cause	Solution
The indicator light does not illuminate and the unit does not operate	The selector switch has not been pressed	Press the selector switch to turn on the unit
	The power cord is damaged	Contact CustomerCare@thesecura.com
	The appliance is not plugged into a working outlet	Plug the appliance into a working electrical outlet
Not frothing	The frothing whisk is not inserted correctly	Insert the frothing whisk into the axle in the milk jug
	The heating whisk is being used in error	
Small amount of froth	Milk is not fresh	Please use fresh milk

AUTOMATIC MILK FROTHER AND HOT CHOCOLATE MAKER

SPECIFICATIONS

Model	F280R
Power Source	120V / 60Hz
Output	600 W
Capacity	150-250 ml
Cord Length	2.5 ft
Dimensions	6.6" x 5" x 7.4"

DISPOSAL



When this appliance has reached the end of its life, please dispose of the unit properly. This and other electrical appliances contain valuable materials that can be recycled. Electronic waste may be harmful to our environment if not disposed of properly. We ask that you follow your governing agency's rules and regulations when disposing of electronic appliances. Please find an authorized recycling facility near you.



CONTACT

If you have any questions or concerns not addressed in this user manual, please call our customer service department at 888-792-2360 or email: CustomerCare@thesecura.com.

Please read operating instructions before using this product.

Please keep the original box and packaging materials in the event that service is required.

SECURA®

Manufacturer's Limited Warranty

The Manufacturer of this product warrants to the original purchaser of this product that this product will be free from defects in material and workmanship under normal use and service for 2 years from date of purchase. Manufacturer will, at its option, repair or replace with a new or refurbished product. Providing a replacement product does not renew or extend the warranty period from the original date of purchase. The Manufacturer reserves the right, before having any obligation under this limited warranty, to inspect the product, and all costs of shipping the product for inspection and warranty service shall be borne solely by the purchaser.

For the fastest processing of a warranty claim, the Purchaser should e-mail CustomerCare@thesecura.com and include the product name and model #, proof of original purchase, complete contact information, and detailed information about the issue, including pictures when applicable.

The manufacturer's limited warranty is valid only in accordance with the following conditions:

1. The product is purchased directly from manufacturer or an authorized reseller or distributor.
2. Only the original purchaser is covered by this warranty. This warranty is not transferable.
3. Product is for personal use only. This warranty is void if the product is used in a commercial or institutional establishment.
4. This warranty does not cover normal wear and tear, or damage caused by misuse, abuse, negligence, accident, acts of nature, or unauthorized modification or repair.
5. Purchaser must present acceptable proof of purchase for the product.
6. This warranty gives you specific legal rights, and you may also have other rights which vary from state to state.

Secura, Inc.
CustomerCare@thesecura.com
Lake Forest, California

SECURA®

Secura Bestsellers

Duxtop Portable 1800W
Induction Cooktop



Secura 1700W Electric
2-in-1 Grill Griddle



Secura Triple Basket
Electric Deep Fryer



Secura Electric
Hot Air Fryer



Duxtop Whole-Clad Tri-Ply Premium Cookware



Secura Electric
Hot Pot Kettle



Secura Electric
Water Kettle



Secura Automatic
Wine Opener



Secura Premium
Wine Aerator



Secura, Inc.

888-792-2360

CustomerCare@thesecura.com

www.thesecura.com

Lake Forest, California

For the fastest processing of a warranty claim, the owner should e-mail CustomerCare@thesecura.com and include the product name and model #, proof of original purchase, complete contact information, and detailed information about the issue, including pictures when applicable.