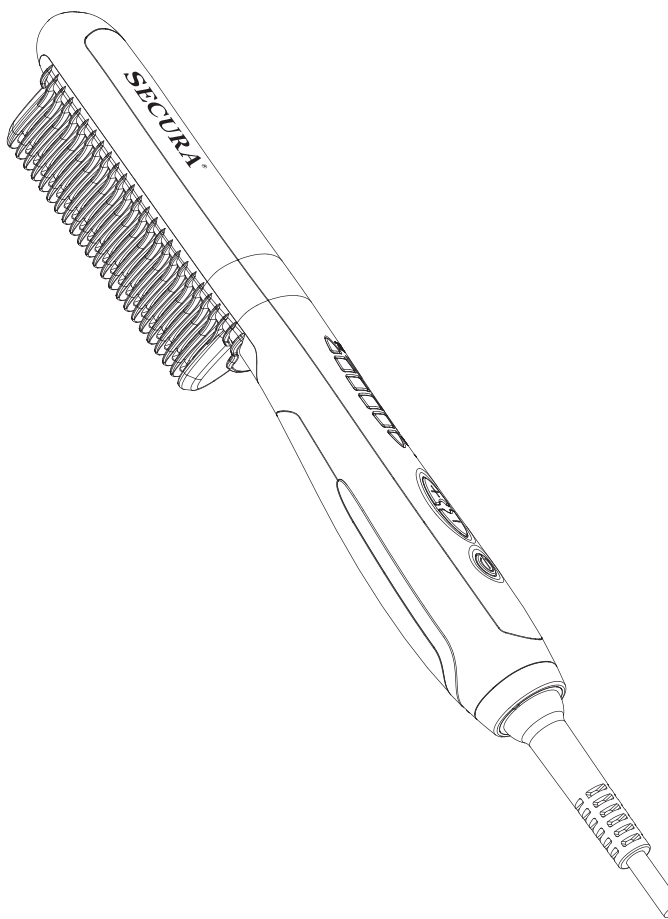


SECURA®



Hair Straightening Comb

INSTRUCTION MANUAL

Model: SC-6L

www.thesecura.com

WELCOME

Congratulations on your new purchase from Secura!

We believe in providing the best products to our customers, and all Secura products meet strict standards for manufacturing, performance, and safety. We believe in providing the best customer service, and that is why we offer a two year warranty that will ensure customer satisfaction. You can expect to continue enjoying your Hair Straightening Comb for many years.

SECURA®

Copyright © 2017 – Secura Inc. - All rights are reserved.

The material in this publication is protected under International and Federal Copyright Laws and Treaties, and as such, any unauthorized reprint or use of this material is strictly prohibited.

No part of this book may be reproduced or transmitted in any form without the written permission of the author, except for the inclusion of brief quotations in a review. Reproduction or translation of any part of this work without the permission of the copyright holder is against the law.

TABLE OF CONTENTS

- 1. IMPORTANT SAFETY INSTRUCTIONS
- 2. ABOUT YOUR PRODUCT
- 3. OPERATING INSTRUCTIONS
- 4. MAINTENANCE INSTRUCTIONS
- 5. SPECIFICATIONS

Hair Straightening Comb

Please read all instructions carefully to familiarize yourself with your new Secura Hair Straightening Comb before the first use.

When using this electrical appliance, especially when children are present, basic safety precautions should always be observed, including the following.

Save these instructions for future reference.



WARNING

- (1) Do not use this product near bathtubs, showers, sinks, or any vessel containing water.
- (2) The appliance should not be used by persons with diminished abilities to feel heat, otherwise, it may result in burns or scalding.
- (3) Immediately stop using it if you experience any pain or abnormalities on your skin or throughout your body.
- (4) Children should be instructed not to play with the appliance. Packing material, such as plastic bags, should be stored beyond the reach of children.
- (5) This appliance is not for straightening the hair of pets.
- (6) Avoid touching any part of the metal prongs on the plug when plugging the appliance into a power outlet.
- (7) Immediately unplug the appliance under the following circumstances in order to avoid accidents or personal injury:
 - When the appliance is not in use
 - The appliance does not work normally
 - Before cleaning
 - After each use
- (8) Keep the appliance away from water and liquid to avoid electric shock.
- (9) Do not wrap the power cord around the appliance to avoid deformation of the cord, which may lead to failure of the appliance.
- (10) Do not use the appliance when the plug is loose in the power outlet.

- (11) Do not remove the power cord from the socket by pulling on it.
- (12) Do not place anything heavy on the cord and do not pinch the cord.
- (13) Do not let pins or dirt get attached to the end of the appliance plug.
- (14) Do not use the device with wet hands or it may lead to electric shock or short circuit.
- (15) Keep the appliance away from infants and children.
- (16) Do not immerse the appliance in water.
- (17) Do not use the appliance near flammable substances (alcohol, thinner, benzene, enamel remover, aerosol sprays, etc.), otherwise, it may result in explosion or fire.
- (18) Do not continue to use this appliance if it has been dropped or damaged.
- (19) Do not insert metal objects such as pins, wires, or any other foreign objects in the device; otherwise, it may result in electric shock.
- (20) Do not attempt to modify, disassemble, or repair the appliance yourself. Contact your dealer or contact our customer service department at www.thesecura.com
- (21) During use, the heating comb tooth area will be very hot. When the appliance is powered on, you should not grasp the comb teeth with your hands or put your hands close to the comb teeth. Hot components should not come into contact with your skin and eyes.
- (22) Before using the appliance, do not apply any flammable materials such as hairspray, styling mousse etc. to your hair or scalp. These materials could ignite if they come into contact with the hot hair comb.
- (23) This appliance can only be used on dry natural hair, do not use on artificial hair.

Hair Straightening Comb



CAUTION

- (1) Periodically clean the whole unit to avoid dust accumulation.
- (2) Always ensure the appliance is operated on an electric power source which matches the rated voltage indicated on the appliance.
- (3) Before starting the device, make sure that the plug is completely inserted into the power socket.
- (4) This appliance is not intended for use by persons (including children) with reduced physical, sensory or mental capabilities, or lack of experience and knowledge, unless they have been given supervision or instruction concerning the use of the appliance by a person responsible for their safety. Children should be supervised to ensure that they do not play with the appliance.
- (5) This appliance is only for use with a grounded AC power socket. Do not put the power cord on sharp edges or clip the cord with clips or hang anything on it. The power cord should be kept away from hot or highly humid places.
- (6) The appliance should not come into contact or be close to combustibles as the temperature of the appliance may reach over 390°F/200°C.
- (7) Do not cover the appliance.
- (8) When the appliance is operating, do not put it on any flammable surface.
- (9) Do not place the appliance or power cord on hot surfaces or close to open fire.
- (10) If the appliance has a damaged cord or plug, or it is not working properly, unplug the appliance immediately and stop using it.
- (11) Keep the air openings free of lint, hair, and any other materials which may cause blockage.

ABOUT YOUR PRODUCT

(1) Simple use and high efficiency:

With the premium PTC ceramic heating components, the hair straightener takes less than 40 seconds to reach the heating temperature of level 1 and less than 80 seconds to achieve the heating temperature of level 4, which is efficient and time-saving for your daily beauty routine.

(2) Six (6) flexible levels to adjust to your hairstyle needs:

Six (6) levels of heating temperatures can be chosen to fit various hair conditions. Our special design, with 23 ceramic heating elements, allows the comb to quickly contact a large portion of the hair at one time. With the 6 different temperature controls and the evenly dispersed heat, professional-looking results can be achieved easily and quickly.

(3) The Secura Hair Straightening Comb allows you to straighten and curl your hair at home, on your own, saving time and money. The distinctive LED indicator provides you with a visible indicator of the temperature of the comb. Also the 360 degree rotating cord means you can hold the device at any angle for the best straightening effect without the possibility of kinking the cord.

(4) Less hair loss, less hair breakage:

Compared with traditional and ordinary heating material, the high-quality PTC ceramic heating components of the Secura Hair Straightening Comb can minimize the breakage and splitting of hair, as well as hair loss. Comb your hair several times and you get smooth and silky hair. The hair straightening effect is long-lasting.

(5) Stylish and premium design:

Not only does this straightener have a unique and luxurious design, but it is also made of the highest quality material and has the latest in technology compared to the ordinary hair straightener.

OPERATING INSTRUCTIONS

1. Parts identification



- ① Straight hair heating comb teeth
- ② Temperature level indicator (6 levels)
- ③ Handle
- ④ Temperature increase “+”
- ⑤ Temperature decrease “-”
- ⑥ Power button
- ⑦ 360 degree rotating power cord

2. How to use

A. Operating steps for straightening hair

- (1) Wash and dry your hair, comb your hair thoroughly (do not use any spray, styling agent or other flammable chemical hair-care products), then wrap a towel around your neck to protect it from the possibility of burns.
- (2) Insert the plug into power socket and press the "Power" button to start the appliance. The appliance will start at level 4 (default).
- (3) Press "+" or "-" to choose different heat levels according to different hair types.
- (4) While heating, the LED corresponding to the heat level chosen will flash. Once the temperature for that level has been reached, the LED will stop flashing and stay illuminated.
- (5) Once the correct temperature has been reached, grasp the handle of the appliance, taking care to maintain a safe distance between the appliance and your skin and eyes.
- (6) Split the hair into even strands, grasp the hair and put the prepared hair strands into the comb teeth, starting from the hair root.



- (7) Smoothly slide the comb from the hair root downward to the end of the hair. Repeat the above actions until you obtain the degree of straightness you desire.

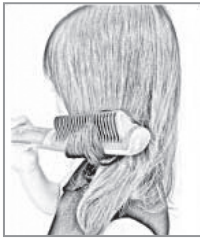


Hair Straightening Comb

(8) After straightening the hair, press the “Power” button again to turn the appliance off. The LED lights will turn off.

B. Operating steps for curling hair

(1) For outward “curling-up” styling, perform steps 1-6 from the **straightening hair instructions**, grasp the hair and curl up outwards around the comb, staying at the end of the hair for 3-5 seconds. Repeat up to 3 times or until the desired effect is achieved.



(2) For inward “curling-up” styling, perform steps 1-6 from the **straightening hair instructions**, grasp the hair and curl up inwards around the comb, stay at the end of hair for 3-5 seconds. Repeat up to 3 times or until the desired effect is achieved.



(3) After you have finished styling, press the “Power” button again to turn off the appliance. The LED lights will turn off.

Note:

- (1) The appliance has a 20 minute auto shut-off feature designed for safety and energy savings. If the appliance shuts off while in use, simply press the "Power" button and it will restart.
- (2) Hair should be clean and dry to achieve the desired results.

Temperature setting

The default starting temperature for the appliance is level 4. The temperature can be adjusted by pressing the temperature increase "+" or temperature decrease "-" buttons. When a level of temperature is set, the LED indicator of that corresponding level will be lit (flashing). When the temperature rises to the pre-set level value, the level indicator will turn from flashing to constant on.

Temperature levels:

Level 1, which is approximately 265°F (130°C), is recommended for combing straight hair or soft and thin hair.

Level 2, which is approximately 290°F (145°C), can be used with blonde, bleached or dyed hair.

Level 3/Level 4, which is approximately 320°F (160 °C) / 350°F(175 °C), is recommended for ordinary and slightly curly hair.

Level 5/Level 6, which is approximately 375°F (190 °C) / 395°F (200 °C), is recommended for thick, curly or coarse hair.

**CAUTION**

During the initial use of the appliance you may notice a small amount of smoke and a slight odor. This is from test material on parts of the appliance that heat up and will disappear in a few seconds. It is a normal condition. Choose the temperature setting for your hair type (from the temperature levels above). Too high a temperature may burn your hair and too low a temperature might not achieve the desired styling effect.

MAINTENANCE INSTRUCTIONS

1. Do not store your appliance in a highly humid area.
2. Before cleaning, unplug the appliance from the power supply.
3. Do not immerse the appliance in water.
4. Do not use corrosive detergent or volatile solutions to clean the appliance.
5. Clean the appliance with a soft wet cloth and then wipe it with a soft, dry cloth

SPECIFICATION

Product Name:	Hair Straightening Comb
Model Number:	SC-6L
Input Voltage:	120V
Power:	33W
Rated Frequency:	50Hz
Heating Method:	PTC heating
Heating temperature:	Approximately 265°F~395°F (130°C -200°C)
Weight:	22oz. (630g)
Package size:	13*4*2.5 in (333*105*63mm)
Product size:	10*1.5*1.8 in (255*38*45mm)

SECURA®

Manufacturer's Limited Warranty

The Manufacturer of the product warrants to the original purchaser of this product from an authorized reseller or distributor that this product will be free from defects in material and workmanship under normal use and service for 2 years after date of purchase. Manufacturer will, at its option, repair or replace with new or refurbished product. The manufacturer reserves the right, before having any obligation under this limited warranty, to inspect the damaged product, and all costs of shipping the damaged product for inspection and warranty service shall be borne solely by the purchaser.

The manufacturer's limited warranty is valid only in accordance with the following conditions:

1. The product is purchased directly from manufacturer or an authorized reseller. The warranty is not transferable, only the original purchaser is covered by this warranty.
2. This warranty is void if the product is used in a commercial or institutional establishment.
3. This warranty is void if the product has been subject to misuse, abuse, negligence, unauthorized modification or repair, or accident. Normal wear and tear are not covered by this warranty.
4. Purchaser must present acceptable proof of original receipt for the product.
5. This warranty does not affect any other legal rights you may have by operation of law.

Secura Inc.
CustomerCare@thesecura.com
Brookfield, Wisconsin. USA

SECURA®

Secura Inc.

Tel: 888-792-2360

CustomerCare@thesecura.com

www.thesecura.com

Brookfield, Wisconsin. USA

For warranty claims, please visit our website
www.thesecura.com to submit a warranty claim and provide
proof of purchase