

## SECURA®

### COFFEE & SPICE GRINDER

Stainless Steel Removable Bowl

Model: SP-7446



[www.thesecura.com](http://www.thesecura.com)



# Welcome to the Secura Family!

Congratulations on being the proud owner of your new Secura product. We believe in manufacturing only the highest quality kitchen, home and personal care products for our customers. We are a U.S.-based manufacturer and all our products meet strict standards for manufacturing, safety and performance.

We also believe in providing the best customer service and support in the industry. That is why we offer a two year warranty on this product that ensures your satisfaction - so you can enjoy it for years to come.

If you have questions or in the rare instance you need to file a warranty claim, please email [CustomerCare@thesecura.com](mailto:CustomerCare@thesecura.com). For fastest response, please include the product name and model #, proof of original purchase, complete contact information, and detailed information about the issue, including pictures when applicable.

Your feedback and suggestions are also important to us, so please email them to us at [CustomerCare@thesecura.com](mailto:CustomerCare@thesecura.com).

The Secura Team

# SECURA<sup>®</sup>

**Copyright 2018 Secura, Inc. All rights reserved.**

The material in this publication is protected under International and Federal Copyright Laws and Treaties, and as such, any unauthorized reprint or use of this material is strictly prohibited.

No part of this book may be reproduced or transmitted in any form without the written permission of the author, except for the inclusion of brief quotations in a review.

Reproduction or translation of any part of this work without the express permission of the copyright holder is against the law.

## TABLE OF CONTENTS

SAFETY PRECAUTIONS .....	1
GRINDER PARTS .....	4
BEFORE USE .....	5
USAGE INSTRUCTIONS .....	6
APPLIANCE CLEANING AND CARE .....	8
PRODUCT SPECIFICATIONS .....	9
DISPOSAL .....	10
CONTACT .....	10
MANUFACTURER'S LIMITED WARRANTY .....	11

# COFFEE & SPICE GRINDER

## SAFETY PRECAUTIONS



**To reduce the risk of fire, injury or electrical shock along with extending the life of your electrical appliances, please read and follow all of the information in this manual before using and save it for future reference.**

Anytime you will be using or handling an electrical appliance of any type, safety precautions should be taken at all times. This includes, but is not limited to, the following:

1. Before using your new grinder, read all instructions and safety precautions.
2. This grinder is for personal use only. It is also for indoor use only. Do not use the grinder in any other manner than its intended use.
3. Do not place the grinder near or on a heated oven, an electric or gas burner, or any other hot surface.
4. Exercise care with the cord. It should never rest on or directly over a hot surface, and it should not hang from a counter, shelf, or table.
5. A short power supply cord is provided to reduce the risk of injury from becoming entangled in or tripping over the cord.
6. An extension cord may be used with care if the marked electrical rating of the extension cord is equal to or greater than the electrical rating of the grinder.
7. If the grinder has a damaged cord or plug, DO NOT operate it. This could result in electric shock, fire, or physical injury. Please contact our customer service department at 888-792-2360 or [CustomerCare@thesecura.com](mailto:CustomerCare@thesecura.com).
8. Before each use, visually inspect the bowl to ensure it is free of any foreign objects.
9. The grinder blades are sharp and should always be handled with extreme care.
10. To avoid potential injury to user or damage to the grinder, the stainless steel bowl must be in the locked position on the grinder base with the lid and clear top cover fully seated before operating.

11. Once the lid and clear top cover are securely in place, press down in the center of the lid with firm even pressure to operate.
12. Keep hands and other objects away from moving blades while processing food to reduce the risk of severe injury to users or damage to the grinder.
13. When the grinder is not in use, a non-metal scraper may be used to gently remove food from the inside of the bowl.
14. To extend the grinder's lifespan and avoid motor damage, do not run the grinder continuously. For best results, coffee beans should be ground by pulsing the grinder in 4 to 8 second bursts. Pulsing allows the beans to be ground more thoroughly, keeps them from retaining heat, and helps release maximum flavor and aroma.
15. Always unplug the grinder when not in use and prior to cleaning, assembling or disassembling.
16. When disconnecting the grinder, remove the plug from the wall outlet by firmly grasping the plug. Never pull on or unplug the unit by the cord.
17. Do not immerse the grinder, cord or plug in water. Do not place the grinder in the dishwasher.
18. Only use Secura brand parts made specifically for this model.
19. To avoid injury to the user or damage to the grinder, do not attempt to disable the Cover interlock mechanism.
20. Always supervise children whenever they are near the grinder. Do not allow children to handle or operate the grinder at any time.
21. In the event service is required for this product, please contact our customer service department at 888-792-2360 or [CustomerCare@thesecura.com](mailto:CustomerCare@thesecura.com).

## COFFEE & SPICE GRINDER



**CAUTION:**

To avoid circuit overload, do not operate another high wattage appliance on the same outlet or circuit.

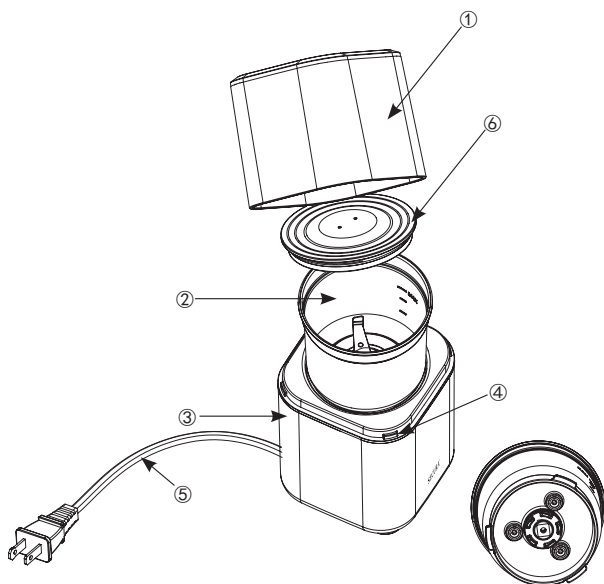


**Always follow basic safety precautions when using any electrical products, especially when children are present.**

**SAVE THESE INSTRUCTIONS  
For Household Use Only**

## GRINDER PARTS

1. Lid
2. Grinder bowl
3. Grinder base
4. Cover interlock mechanism
5. Power cord
6. Clear top cover



Bottom view of  
stainless steel  
bowl

**This grinder is designed for grinding coffee beans and milling spices.**



# COFFEE & SPICE GRINDER

## Additional Safeguards and Instructions

### Polarized Plug

Your new grinder has a polarized plug with one prong wider than the other. To reduce the risk of electrical shock, the plug will only fit in an outlet one way. If the plug does not fit into the outlet, flip the plug over and try again. If it still does not fit, stop and contact a licensed electrician. Do not force plug into the outlet or modify the plug or outlet in any way.

## BEFORE USE

After unpacking the grinder, be sure to remove all packing materials and clean the grinder thoroughly. The blades are extremely sharp, so please handle with care. Wash the bowl, lid and cover in warm soapy water and dry thoroughly. Wipe down the exterior of the grinder using a soft damp cloth. Do not use harsh abrasives or scrubbing materials as they will damage the grinder.

## USAGE INSTRUCTIONS

### For Grinding Coffee Beans:

1. With the grinder base on a stable, level surface, lock the grinder bowl into the base by turning clockwise. The grinder will not operate unless all parts are securely in place.
2. Fill the bowl with the desired quantity of beans up to the max line on the side of the bowl. Do not use more than ½ cup (2.5 ounces) of beans. Overfilling may damage the grinder.\*
3. Insure the inside of the lid and clear top cover are free of ground coffee or other residue.
4. Secure the cover on top of the grinder bowl, then place the lid over the grinder bowl.
5. Once the lid and clear top cover are securely in place, press down in the center of the lid with firm even pressure to operate.
6. For best results, coffee beans should be ground by pulsing the grinder in 4 to 8 second bursts for up to a 30-second cycle. Pulsing allows the beans to be ground more thoroughly, keeps them from retaining heat, and helps release maximum flavor and aroma.
7. To protect the motor, do not run the grinder continuously for longer than 30 seconds in a cycle. After 3 cycles, allow the grinder motor to return to room temperature before continuing. The grinder has a built-in heat sensor and will shut down if the motor begins to overheat. If the grinder stops working, please allow the motor to cool down before operating.
8. Once the grinder is turned off and the blades have come to a full stop, unplug the coffee grinder.
9. Remove the lid. Unlock the bowl by turning it counterclockwise. After removing the bowl from the grinder base, carefully remove the cover to empty the contents.
10. With the grinder unplugged, a non-metal scraper may be used to gently free any food from inside the bowl.

# COFFEE & SPICE GRINDER

\*Most manufacturers include requirements or recommendations regarding the best grind to use with their coffee makers. Follow the instructions from the manufacturer for optimal results.

You can experiment with your grinder to determine what type of grind works best for the type of beans, brand of coffee maker, and amount of grounds you are using.

In general, coarsely ground beans (a shorter processing time) have less surface area and will take longer to release their flavor. Finely ground beans (a longer processing time) have more surface area and release flavor faster.

To enjoy fresh, robust, and flavorful coffee, do not grind more beans than needed at the time. Coffee beans usually become stale and less flavorful faster when stored as grounds. A large pot coffee maker may require up to two chamber of coffee grounds for maximum capacity brewing.

Coffee beans generally retain their peak freshness for up to two months when stored frozen in a dark, airtight container and may be ground immediately upon removal from the freezer.

## **For Grinding Herbs and Spices:**

Your grinder can also be used to grind dried herbs, spices, and seasoning blends. Freshly ground seasonings often impart a more intense flavor and give you the opportunity to create unique blends to suit your palate.

Follow the above steps using your desired herb or spice. Spices that grind the best include peppercorns, whole allspice, coriander seeds, mustard seeds, celery seeds and flax seeds. The maximum amounts for herbs and spices vary by type. For harder spices, such as coriander seed or cinnamon bark, the maximum is 1 to 2 Tablespoons (0.5 to 1 ounce). For softer items, such as peppercorns or allspice berries, the maximum is 2 to 3 Tablespoons (1 to 1.5 ounces).

Oily spices like cinnamon or cloves can discolor the lid. Hard grains, such as rice or rye, and other hard foods may overheat the motor, pit or crack the lid, or cause other damage and should be avoided.

## APPLIANCE CLEANING AND CARE

- Before cleaning, always unplug the grinder from the power outlet.
- Clean the bowl, lid and cover after each use. This will provide the best and most flavorful results and avoid cross-contamination of flavors.
- The stainless steel bowl, lid and clear top cover are top rack dishwasher-safe. However, washing in hot soapy water is recommended. Rinse and dry after washing. Use care when cleaning the blades as they are very sharp. A small, soft bristled brush can be used in order to remove particles that are wedged in the grinder.
- Use a soft, damp cloth to wipe down the grinder base.
- Never use harsh chemicals or abrasive cleaners on the grinder or its parts.
- DO NOT put the grinder base in the dishwasher or immerse it in water.
- If ingredients become lodged under the blades, remove the lid and cover, empty the bowl, replace the cover and lid and pulse for 1 to 2 seconds to help dislodge the remaining particles.
- If food odors remain in the bowl after cleaning, fill the bowl with baking soda, replace the cover and allow it to sit overnight. Once the baking soda is removed, the grinder should be free of odors. Cleaning the grinder thoroughly and immediately after each use will reduce the chance of lingering odors.

# COFFEE & SPICE GRINDER

## PRODUCT SPECIFICATIONS

<b>Model number of the product</b>	SP-7446
<b>Power source</b>	120V
<b>Power frequency</b>	60Hz
<b>Power consumption</b>	200W

## DISPOSAL



When this appliance has reached the end of its life, please dispose of the unit properly.



This and other electrical appliances contain valuable materials that can be recycled. Electronic waste may be harmful to our environment if not disposed of properly.

We ask that you follow your governing agency's rules and regulations when disposing of electronic appliances. Please find an authorized recycling facility near you.

## CONTACT

If you have any problems with this unit, please contact our customer service department at 888-792-2360 or e-mail us at [CustomerCare@thesecura.com](mailto:CustomerCare@thesecura.com)

Please read the operating instructions before using this product.

Please keep the original box and packaging materials in the event that service is required.

# SECURA<sup>®</sup>

## *Manufacturer's Limited Warranty*

The Manufacturer of this product warrants to the original purchaser of this product that this product will be free from defects in material and workmanship under normal use and service for 2 years from date of purchase. Manufacturer will, at its option, repair or replace with a new or refurbished product. The Manufacturer reserves the right, before having any obligation under this limited warranty, to inspect the product, and all costs of shipping the product for inspection and warranty service shall be borne solely by the purchaser.

For the fastest processing of a warranty claim, the Purchaser should e-mail [CustomerCare@thesecura.com](mailto:CustomerCare@thesecura.com) and include the product name and model #, proof of original purchase, complete contact information, and detailed information about the issue, including pictures when applicable.

The manufacturer's limited warranty is valid only in accordance with the following conditions:

1. The product is purchased directly from the Manufacturer or an authorized reseller or distributor.
2. Only the original purchaser is covered by this warranty. This warranty is not transferable.
3. Product is for household use only. This warranty is void if the product is used in a commercial or institutional establishment.
4. This warranty does not cover normal wear and tear, or damage caused by misuse, abuse, negligence, accident, acts of nature, or unauthorized modification or repair.
5. Purchaser must present acceptable proof of purchase for the product.
6. This warranty gives you specific legal rights, and you may also have other rights which vary from state to state.

Secura, Inc.  
[CustomerCare@thesecura.com](mailto:CustomerCare@thesecura.com)  
Lake Forest, California

# SECURA®

## Secura Bestsellers

Duxtop Portable 1800W  
Induction Cooktop



Secura 1700W Electric  
2-in-1 Grill Giddle



Secura Triple Basket  
Electric Deep Fryer



Secura Electric  
Hot Air Fryer



Duxtop Whole-Clad Tri-Ply Premium Cookware



Secura Electric  
Hot Pot Kettle



Secura Electric  
Water Kettle



Secura Electric  
Wine Opener



Secura Premium  
Wine Aerator



Secura, Inc.

888-792-2360

CustomerCare@thesecura.com

***www.thesecura.com***

Lake Forest, California

For the fastest processing of a warranty claim, the owner should e-mail CustomerCare@thesecura.com and include the product name and model #, proof of original purchase, complete contact information, and detailed information about the issue, including pictures when applicable.