



# SECURA AUTOMATIC MILK FROTHER



SECURA







**Copyright © 2010 – Secura Inc. - All rights are reserved.**

The material in this publication is protected under International and Federal Copyright Laws and Treaties, and as such, any unauthorized reprint or use of this material is strictly prohibited.

No part of this book may be reproduced or transmitted in any form without the written permission of the author, except for the inclusion of brief quotations in a review.

Reproduction or translation of any part of this work without the permission of the copyright holder is against the law.

## Contents

- 1 Copyright Notice
- 2 Table of Contents
- 3 Welcome
- 4 General Safety Instructions
- 6 Parts List
- 7 Getting Started
- 8 Instructions
- 11 Other Useful Information
  - Cleaning and Care
  - Disposal
- 12 Manufacturer's Limited Warranty

## Welcome

Congratulations on your new purchase from Secura!

We believe in providing the best products to our customers, and all Secura products meet strict standards for manufacturing, performance, and safety. We believe in providing the best customer service, and that is why we offer a two year warranty that will ensure customer satisfaction. You can expect to continue enjoying your new milk frother for many years.

## General Safety Instructions

Before any use of the Secura Milk Frother, it is vital that you read all parts of this manual, including safety details and product instructions. When you follow the safety instructions, you will be able to avoid the risk of electric shock, fire, or injury to yourself and others. Be sure to store this manual so that you will be able to reference it in the future.

When using any electrical appliance, be sure to follow precautions to ensure your safety.

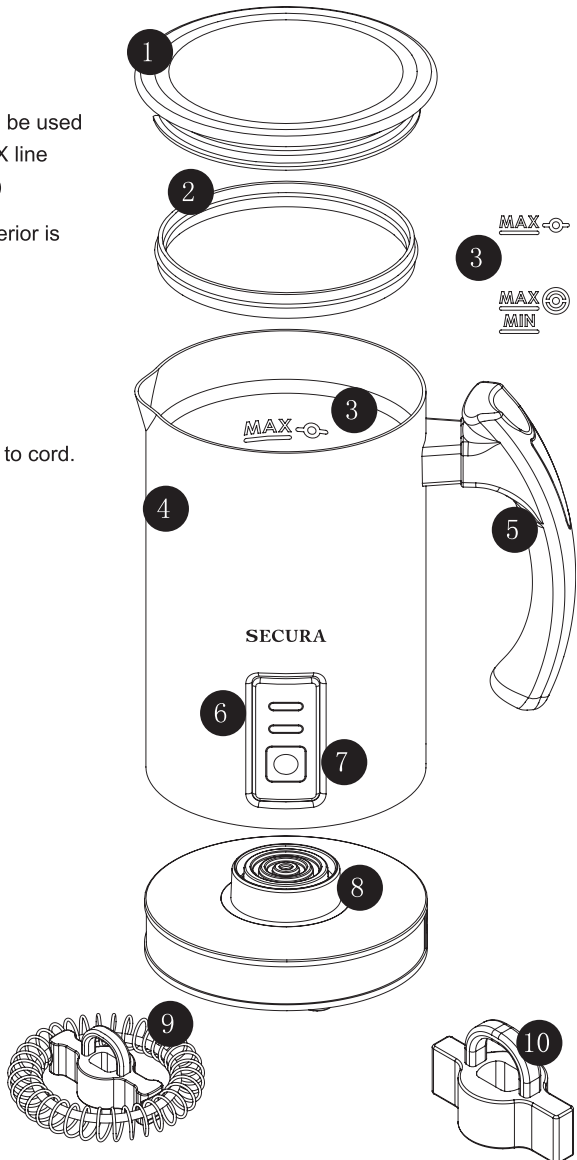
- Be sure that the electrical outlet being used is capable of producing the right voltage and ensure that the outlet is grounded.
- **WARNING!** Never immerse an electrical appliance or any part of the cord or plug in any liquids including water. Electrical connections should never be exposed to water due to the risk of electric shock or electrical fire. Never operate the device with wet hands.
- Do not make use of an extension cord with this electrical appliance.
- Be sure to keep the electrical cord off of the ground to avoid trips and falls.
- Do not damage the cord with sharp edges or heat. Additionally, do not bend, smash, or strain the cord in order to avoid damage.
- Before use of the appliance, be sure to unwind the power cord and ensure that the cord has no kinks or crimps.
- If the power cord or the plug has become damaged, do not operate the appliance and avoid picking it up.
- Contact customer service if the device has become damaged.
- After each use, unplug the appliance and only clean the appliance when no power is running to it.
- To disconnect the appliance, be sure to turn off the power and then gently pull the plug from the wall outlet. Do not unplug by pulling on the cord itself.
- This is not a commercial appliance. It should only be used for household purposes and should only be used in indoor conditions.
- The purpose of this appliance is for frothing or heating milk. It should not be used for any other purpose.

- This appliance should only be used by adults. It should not be used by anyone with reduced mental or physical capacity. At all times, the use of the appliance should be supervised by someone with full experience and knowledge of using electrical apparatuses.
- Children should not be allowed to play with or near the milk frother.
- The use of attachments and accessories that are not intended for the device by the manufacturer could result in personal injury, electric shock, or fire.
- Improper handling or setup of this device could risk personal injury from electric shock as well as fire. Any damage or injury from improper use of the appliance puts no liability on us.
- The device should only be used on flat, even surfaces.
- Use of this device on wood surface of any type could result in the damage of that surface.
- Never operate the device without milk.
- The power cord is intended for this device only and should not be used with any other appliance.
- Only fill the milk container to the appropriate fill level. Do not overfill.
- Do not touch any moving parts within the frother or you could suffer from injury.
- **WARNING!** Never leave the device on and unattended. When not in use, ensure that the device is switched off and unplugged.

# SECURA AUTOMATIC MILK FROTHER

## Parts List

1. Transparent Lid
2. Silicon Ring (Attached to the lid)
3. Level Marks (The top line should be used for heating milk. The bottom MAX line should be used for frothing milk.)
4. Stainless Steel Housing (The interior is coated with non-stick material.)
5. Handle
6. Indicator Light
7. On/Pause Control Button
8. Swivel base, which is connected to cord.
9. Milk Frothing Whisk
10. Milk Heating Whisk





## Getting Started

### Before use, follow these instructions carefully:

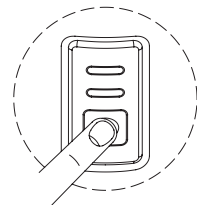
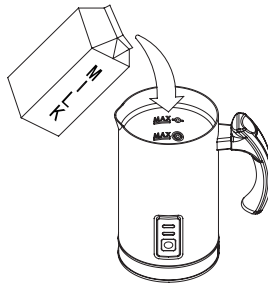
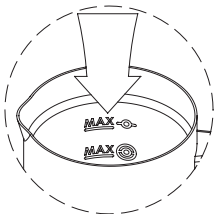
- Unpack all parts from the box. Please keep all of your packing materials until you ensure that the milk frother is in proper working order.
- Do not leave plastic wrapping within the reach of small children and babies. It is a suffocation hazard.
- Ensure that the cord and the power plug are undamaged. If there is any damage to the cord or the plug, do not use the device.
- Before use of the device, clean the milk container as well as the accessories. You can find cleaning information under the "Cleaning and Care" section of this manual.

### Assembly

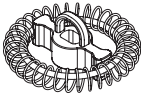
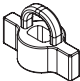
The milk frother that you have purchased includes two different whisks. One of these is for frothing milk and the other is for heating milk.

- The milk frothing whisk includes plastic housing with a metal spiral ring.
- The milk heating whisk is slightly smaller and is made from plastic.
- Use one whisk and store the other one not in use at the inside of the lid.

Follow the proper instructions for heating or frothing milk with the proper whisk.



## Instructions

Whisk	Function	Max. capacity	Time (sec.)
	Frothing Only	125ml	65
	Frothing and Heating	125ml	60-90
	Heating Only (a small amount of froth)	250ml	120-140

- Based on the instructions under assembly, choose the correct whisk and set it within the milk container.
  - Add milk to the container. Do not add more milk than the maximum line, which is marked inside the container. (The bottom line is for frothing milk. The top line is for heating milk.)  
**WARNING:** DO NOT operate without minimum level of liquid in the container.  
 DO NOT operate when there is no whisk set in place.
  - Close the lid on the container and make sure it is sealed.
  - (a) Frothing and heating or heating only.**  
 Begin by pressing the on button. Ensure that the blue and red indicator lights are lit. When the milk is frothed or properly heated, the blue light will go off. When the red light starts flashing, it indicates the milk is ready for use.
  - (b) Frothing only**  
 Press and hold the on button. After 2-3 seconds, the blue light will be lit. When it stays lit for 65 seconds and then the red light flashes for 30 seconds indicating, the frothing is complete.
- Note:** If the blue light begins flashing, then there is too much milk in use and the machine is in danger of malfunctioning. At this time, turn off the machine and pour out milk until it is below the maximum line. Turn the machine back on.
- The milk frother will need approximately 2-3 minutes before it can be used again. Allow the thermostat to reset before frothing or heating more milk. If you wish to use the frother immediately, rinse the container with water and wipe it dry with a clean cloth (refer to cleaning and care instructions in this manual) .

## Hints and Tips

The tips below will help you use your new milk frother in the best possible manner.

- If adding the frothed milk to a hot drink, prepare the beverage, such as coffee or hot chocolate while the frother is in use. Serve immediately for the best flavor.
- The frother can froth milk without heating. The frother is not capable of cooling milk and will maintain the temperature of the milk that is placed in it.
- When using the heat setting, the frother will heat the milk to the ideal temperature for your coffee or hot beverage without making it too hot to drink right away. Your beverage will not have to sit or cool down before you can drink it.
- Do not allow young children to play with the whisks. They could be lost or damaged. Additionally, the whisks could cause injury to very small children. They should be stored out of child reach for safety.
- Do not use anything other than milk in the frother. Other items, like flavoring, coffee, or hot chocolate could cause damage. If you do use any of these products, be sure to clean the frother properly.

# SECURA AUTOMATIC MILK FROTHER

## Serving Suggestions

Below are some recipe ideas for your milk frother. These quick and easy recipes are sure to be a hit.

<b>Frothed milk</b>	Cappuccino	1/3 espresso, 2/3 frothed milk (for extra flavor, top with cocoa powder)
	Latte Macchiato	Add frothed milk to a tall glass first. Then, add espresso slow by pouring along the edge of the glass.
	Frothy coffee	Add frothed milk to instant coffee.
<b>Hot milk</b>	Caffè Latte	1/3 espresso and 2/3 heated milk.
	Hot Chocolate	Place heated milk in a mug and add cocoa powder.
	Milky Coffee	Add hot milk to instant coffee granules.

## Other Useful Information

### Cleaning and Care

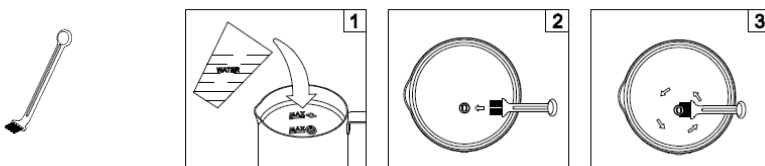
Always remove the container from the power swivel base before you begin to clean it.  
**Do not immerse the container or the power base in water or any other liquid.**

- **The container.** Always clean after each use. To do this, rinse the interior with warm, soapy water. Use a soft cloth to wash. Dry with a clean cloth.
- **The lid.** Remove the silicon ring and then wash each piece, rinsing thoroughly. Assemble the lid for easier storage.
- **The exterior of the frother.** This should only be wiped with a dry, soft cloth.

**Note:** Never make use of sharp edges, scrubbing brushes or any abrasive materials on the milk frother. Do not use abrasive cleaners on the exterior or the interior of the frother. This could scratch the stainless steel exterior and damage the non stick surfaces on the interior.

- **The whisks.** Remove the whisks and then wash them in warm, soapy water. Be sure to dry them thoroughly before storage. Do not place the whisks or any part of the frother in the dishwasher. Always store the whisks in a safe place out of the reach of children.

Remove milk residue inside the container and around the axle using soft brush comes with the product. Milk residue may cause malfunction if not cleaned properly.



1. Pour the just enough water into the milk frother (just immerse the axle sleeve )
2. Insert the brush into the bottom of axle sleeve.
3. Turn the brush 360° around the axle to remove milk residue.

### Disposal

When the appliance has reached the end of its life, please be responsible with its disposal. This and other electrical appliances contain valuable material and can be dangerous to the environment if not disposed properly. We ask that you follow the rules and regulations of your town as far as disposing of electric appliances. Please endeavor to take the appliance to an authorized recycling facility near you.



## *Manufacturer's Limited Warranty*

The Manufacturer of the product warrants to the original purchaser of this product from an authorized reseller or distributor that this product will be free from defects in material and workmanship under normal use and service for 2 year after date of purchase. Manufacturer will, at its option, repair or replace with new or refurbished product. The manufacturer reserves the right, before having any obligation under this limited warranty, to inspect the damaged product, and all costs of shipping the damaged product for inspection and warranty service shall be borne solely by the purchaser.

The manufacturer's limited warranty is valid only in accordance with the following conditions:

1. The product is purchased directly from manufacturer or an authorized reseller. The warranty is not transferable, only the original purchaser is covered by this warranty.
2. This warranty is void when the product is used in a commercial or institutional use.
3. This warranty is void if the product has been subject to misuse, abuse, negligence, unauthorized modification or repair, or accident. Normal wear and tear are not covered by this warranty.
4. Purchaser must present acceptable proof of original receipt for the product.
5. This warranty does not affect any other legal rights you may have by operation of law.

Manufactured by  
Secura Inc.  
Brookfield, Wisconsin, USA  
CustomerCare@thesecura.com





Manufactured by Secura Inc.  
Brookfield, Wisconsin, USA

Tel: 888-792-2360

Fax: 866-941-6918

CustomerCare@thesecura.com

*[www.thesecura.com](http://www.thesecura.com)*

For warranty claims, please visit our website [www.thesecura.com](http://www.thesecura.com)  
to submit a warranty claim and provide proof of purchase