



Secura Water Boiler and Warmer ELECTRIC THERMO POT

INSTRUCTION MANUAL

Model: WK63-M2





Copyright © 2015 – Secura Inc. - All rights are reserved.

The material in this publication is protected under International and Federal Copyright Laws and Treaties, and as such, any unauthorized reprint or use of this material is strictly prohibited.

No part of this book may be reproduced or transmitted in any form without the written permission of the author, except for the inclusion of brief quotations in a review.

Reproduction or translation of any part of this work without the permission of the copyright holder is against the law.

Table of Contents

COPYRIGHT NOTICE	1
ILLUSTRATION - A	3
ILLUSTRATION - B	4
SAFETY INSTRUCTIONS	5
OPERATING INSTRUCTIONS	7
CLEANING INSTRUCTIONS	11
BASIC MAINTENANCE AND TROUBLESHOOTING	12
SPECIFICATION	13
MANUFACTURER'S LIMITED WARRANTY	14

ATTENTION:

Please be sure that you thoroughly read this manual before using this device. Please keep a copy of this manual for future reference.

ILLUSTRATION - A

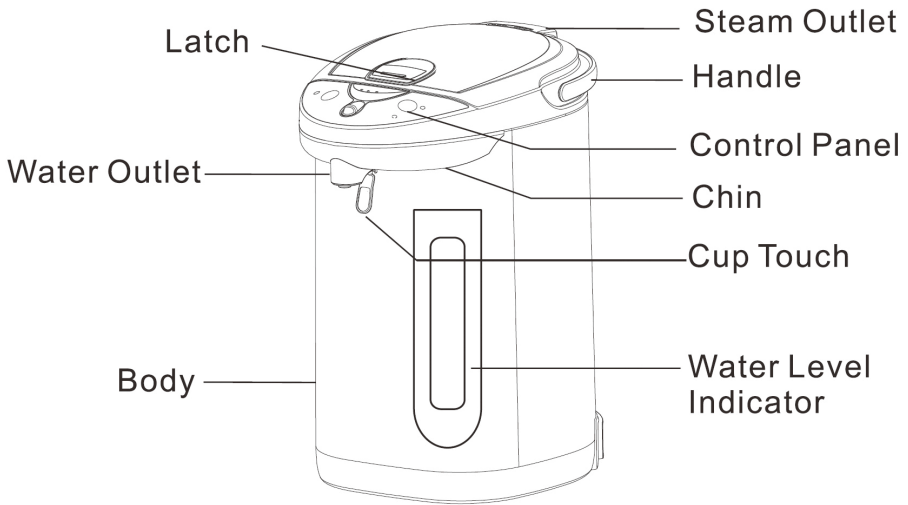
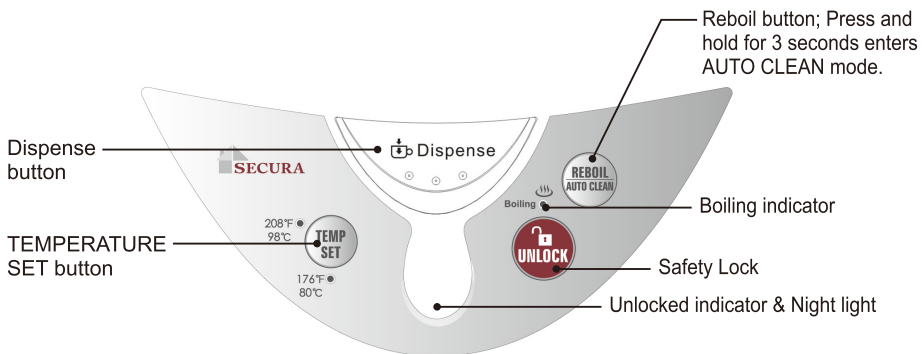


ILLUSTRATION – B

Control Panel WK63-M2



SAFETY INSTRUCTIONS

Please read these safety instructions carefully before using this device.

1. Please review the device illustrations before use.
2. This device is designed strictly for household use, not designed for commercial use. Please do not use it for anything other than this intended usage.
3. Only operate the Thermo Pot on a stable, flat, and heat resistant surface. Never tilt the device since it may cause heated water to spill from the spout or steam vent and lead to burning, scalding or a more severe injury.
4. Please use great caution when handling the device at times when it contains recently heated or boiled water.
5. Mind the steam vent, water outlet or additional hot surfaces. Always use the handle when moving or lifting the device, and avoid blocking the steam vent with any other items or objects.
6. Handle the power cord with care. Be careful not to tug, pull, or bend the cord, and do not operate the device if the cord has been damaged in any way. Do not plug in the device if it is damaged in any way.
7. You must always attach the power cord to the device first AND THEN connect the cord to the wall outlet or power supply. To disconnect the device you must remove the plug from the wall outlet or power supply first.
8. Remember to always unplug the Thermo Pot from the power outlet while not in use.
9. Never fill the device beyond the indicator line as this may cause splashing of boiling water, leading to a burn or scalding. Ensure that the lid is secured accordingly. **WARNING:** Never open the lid of the device while water is boiling as this is going to lead to scalding and injury.
10. Please remain aware of the potential for splashing as water reaches a boil. The hot water outlet or spout area may represent a hazard for a few moments after boiling occurs and after the device is turned off.
11. **This device is for the boiling of water, do NOT fill it with any other liquids or materials as this will damage the device and make unsuitable for further use.**
12. Do not use the Thermo Pot on a stove top burner, hot plate, or cooker of any kind as it is not designed for exposure to direct heat.
13. Be aware of children when the device is in use. Do not position the Thermo Pot anywhere

SAFETY INSTRUCTIONS

near countertop edges or in a way that allows the power cord to hang freely. This may allow a child to grab or pull the device down from the counter where injury and scalding can occur.

14. Do not allow unsupervised usage of this device by persons with lack of experience or knowledge of its operation. Additionally, children or people with physical disabilities should only be allowed to operate the device with assistance from a qualified adult.
15. NOTE: The REBOIL switch cannot be switched off manually during use.
16. When cleaning the device you must unplug the device and wait until it is completely cool before removing the lid and beginning any cleaning operation.
17. Do not submerge the Thermo Pot or its power cord in liquid or water at any time.
18. When there are indications of malfunction or clear damage to the power cord or plug, stop using the device immediately. Never attempt to repair this device yourself, but instead take it directly to an authorized repair or maintenance center.
19. There are no accessories or attachments for this device, and the use of any custom attachments is not recommended by the manufacturer as this will result in electrical shock, injury, fire, or damage to the device.
20. Dry the appliance fully before storing.

OPERATING INSTRUCTIONS

Save these instructions

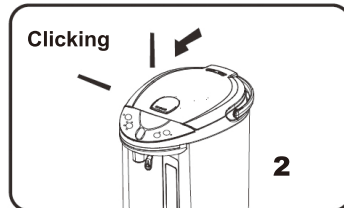
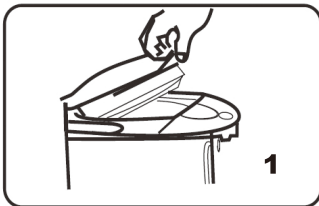
Prior to Plugging in Your Thermo Pot:

1. Check that the electrical supply required is the same as indicated on the underside of your Thermo Pot.
2. Prior to using the Thermo Pot for consumable water, be sure to boil several pots of water (discarding them after they have been boiled) to ensure that the pot is completely free of debris or any coatings left over from the manufacturing process.

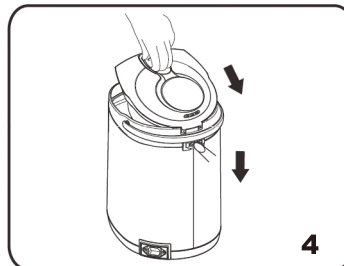
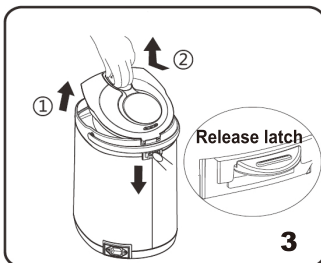
Opening, Closing, Removing and Attaching the Thermo Pot Lid:

Note: Never do any of the following procedures without first ensuring that the Thermo Pot is cool and unplugged.

1. To open the lid: Lift up the latch at a 45 degree angle until you hear it click. Continue to lift the lid in order to open it fully.



2. To close the lid: Simply press gently down on the lid until you hear the clicking sound that indicates it is latched into place.
3. To remove the lid: Press the release latch at the back of the lid, raise the latch until the lid is at approximately 45 degree angle and pull the lid away from the body of the device.

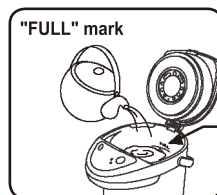


OPERATING INSTRUCTIONS

4. To attach or re-attach the lid: Position the lid back at the 45 degree angle and slide the shaft of the hinge into the hinge that is attached to the body of the Thermo Pot. Press the top of the latch at the hinge, and gently and allow the hinge shaft to click into place.

Filling and Using the Thermo Pot:

1. Properly open the lid of the Thermo Pot as instructed above.
2. Use the Water Level Indicator to fill the pot to the "FULL" level:
 - a. Never fill beyond the "FULL" indicator as this may lead to splashing and injury;
 - b. Be sure that the water is kept above the "REFILL" mark on the Water Level Indicator at all times;
 - c. Try to prevent water from contacting the Control Panel on the lid;
 - d. Use water only and do not attempt to boil any other fluid or foods in the Thermo Pot;
 - e. Distilled and purified water are highly recommended for use in this device.
3. Close the lid of the Thermo Pot as instructed in the previous section, and be sure that the clicking sound is heard before continuing.
4. Attach the Power Cord to the device and then connect the cord to the power supply or wall outlet. This triggers the Thermo Pot to automatically begin the boiling process. You will note the "Boiling" indicator light has become illuminated.
 - a. The TEMP indicator light flashings at this time because it means that the Thermo Pot is set to keep the water at that temperature after boiling unless otherwise indicated.
5. When the water has boiled the indicator light stops flashing. Dispense hot water by pressing the "UNLOCK" button and then pressing the "DISPENSE" button to pour the heated water into individual cups or other vessels.
6. Should you need to re-heat the water or make a new pot of boiling water, be sure that the Water Level Indicator is above the REFILL mark and then hit the "REBOIL" button.
7. Never open the lid during any boiling or re-boiling process and never put your hands (or other objects) near the cover or the steam vent.



OPERATING INSTRUCTIONS

To Safely Dispense Water

Note: Never touch or open the lid of the device while water is boiling.

1. When water has stopped boiling you may safely press the “UNLOCK” button and see that the unlocked indicator light has become illuminated. Water will not be dispensed by the electric pumping device unless this light has turned on.
2. Place the cup or vessel beneath the dispensing spout on the Thermo Pot.
3. Press the “DISPENSE” button, keeping pressure on it until the appropriate amount of water has been dispensed. Note that the water stream begins with a low volume to prevent any scalding, splashing or injury. (available on selected models)
4. Water can be dispensed by CUP TOUCH behind WATER OUTLET. When you release pressure on the DISPENSE button the Thermo Pot will automatically LOCK within 15 seconds.
5. When water is not dispensing in a smooth and even manner it usually indicates that a proper cleaning is required. (Please see the Cleaning Instructions below)

Adjusting the Temperature Setting

NOTE: When setting is changed to a higher temperature it will always REBOIL at this new temperature unless otherwise indicated.

1. Press the “TEMP SET” button until the indicator light for the required temperature begins to flash.
2. When the Thermo Pot is disconnected from the power supply, it resets the temperature and will reboil and hold all water to the default temperature setting unless manually changed.

OPERATING INSTRUCTIONS

Protecting the Thermo Pot from Over-Heating

The Thermo Pot is designed so that there is always a minimum amount of water left in the pot. This is a safety feature that prevents the pot from boiling dry. Refill immediately when water level is too low to dispense water.

In the event that the pot is completely empty, overheating will occur.

The device has two automatic safety features that cause the Thermo Pot to cease heating when an “overheat situation” is possible.

1. AUTOMATIC SAFETY #1: When the water level is too low all of the device lights will flash
2. AUTOMATIC SAFETY #2: Should the Thermo Pot experience a dry boil for any period of time, all of the lights will flash.
3. Should any over-heating occur, or should the device initiate an AUTOMATIC SAFETY procedure you should unplug the power cord and wait for the device to cool. Fill with cool water and plug the device back into the power supply. Normal function should be possible after the cooling down and power resetting.
4. When sure that the device has cooled it is safe to boil water again.

NOTE: When the Thermo Pot has been allowed to dry-boil a number of times there will be a noticeable discoloration of the interior of the tank due to high temperatures.

CLEANING INSTRUCTIONS

NOTE: Always disconnect from power and allow to cool, remove lid and empty any water before doing any cleaning procedures.

Exterior Cleaning:

With a soft damp cloth and mild cleaning agent wipe the exterior of the Thermo Pot. Do not use any abrasive cleansers or rough cloth as this will damage or scratch the surface of the device. Be particularly careful of the Water Fill Level area, as this must remain easy to read.

Interior Cleaning:

NOTE: The Thermo Pot relies on a stainless steel interior, which provides you with safe daily use. There are no plastic coatings, and this ensures that your device will enjoy a substantially longer life and will operate at higher levels of efficiency. Cleaning is something that should be done regularly. We suggest that owners rely on "Bar Keeper's Friend Cookware Cleanser & Polish" to keep the stainless steel interior in top condition. We also recommend the use of purified or distilled water for the best results.

1. Begin with cleaning the filter with a brush and warm water. Do not use detergent, but a mild citric acid stainless steel cleanser may be applied (make sure the cleanser you use does not leave any after-taste).
2. Fill the chamber with water.
3. Press down on the AUTO CLEAN button for three seconds. At that time the "AUTO CLEAN" function begins.
4. While the AUTO CLEAN procedure occurs the temperature setting indicators will alternately flash.
5. After the AUTO CLEAN procedure completes, allow the pot to cool slightly and then press the DISPENSE button to remove as much of the water as possible.
6. Unplug the Thermo Pot from its power supply and allow to cool completely. Open the lid and pour out the remaining water. It is recommended that the Thermo Pot is then refilled, reboiled and emptied again.
7. Wipe down the interior with a damp cloth, rinse again, and then use a softer dry cloth to pat dry the interior of the Thermo Pot.

Note that the interior of the device may become rusted or discolored over time. This is due to the deposits of lime or other particles that cling to the stainless steel. You must not use any detergents to remove them since they can leave an after-taste or cause damage to the inner chamber. Rust spots and discolored areas can be cleaned by special stainless steel cookware cleansers, for example "Bar Keeper's Friend Cookware Cleanser & Polish".

WARNING: If you notice any particles or deposits in the pot, always pour the water out from the top opening whenever possible. Do not let those particles go down through the pump.

BASIC MAINTENANCE AND TROUBLESHOOTING

NOTE: Should the power cord or device plug sustain damage it is important to cease using the device immediately. The entire unit should then be delivered to an authorized repair agent or maintenance center.

There are some common issues that do not require professional assistance. They include the following problems, causes and solutions:

Problem	Common Cause	Solution
No power to the device.	Loose power cable.	Manually inspect the power cable and connection.
REBOIL button is not working.	Water level is too low.	Fill with water
Water will not dispense or is not dispensing smoothly	No power	Manually inspect the power cable and connection.
	Boiling has just occurred and air bubbles are trapped within the chamber.	Open lid to release air and then close lid.
	Interior is dirty and filter blocked	Clean following the proper procedures.
Water spilling out of the unit.	Water added above FULL line.	Remove excess water until indicator shows it below the FULL line.
White residues in water.	Mineral deposits have occurred	Clean the interior of the pot according to instructions.
Boiling sound is excessively loud	Interior is dirty or the filter blocked.	Clean the entire unit according to instructions.

SPECIFICATION

MODEL	WK63-M2
CAPACITY	4 Quart
VOLTAGE	120V
CYCLES	60Hz
WATTAGE	750W



Manufacturer's Limited Warranty

The Manufacturer of the product warrants to the original purchaser of this product from an authorized reseller or distributor that this product will be free from defects in material and workmanship under normal use and service for 1 year after date of purchase. Manufacturer of this product will, at its option, repair or replace with new or refurbished product. The manufacturer reserves the right, before having any obligation under this limited warranty, to inspect the damaged product, and all costs of shipping the damaged product for inspection and warranty service shall be borne solely by the purchaser.

The manufacturer's limited warranty is valid only in accordance with the following conditions:

1. The warranty is not transferable, only the original purchaser is covered by this warranty. The product is purchased directly from manufacturer or an authorized reseller.
2. This warranty is void when the product is used in a commercial or institutional use.
3. This warranty is void if the product has been subject to misuse, abuse, negligence, unauthorized modification or repair, or accident. Normal wear and tear are not covered by this warranty.
4. Purchaser must present acceptable proof of original receipt for the product.
This warranty does not affect any other legal rights you may have by operation of law.

Secura Inc.
Brookfield, Wisconsin, USA
www.thesecura.com

Secura Bestsellers

Secura Turbo Oven 777MH & 798DH



Secura Turbo Oven Mini CO-05MH & CO-05DH



Secura Stainless Steel
Food Steamer



Secura 4.2L Triple-Basket
Deep Fryer



Duxtop Induction Cooktop 8100MC & 8300ST



Secura Ice Cream Maker with Self-
Refrigerating Compressor



Duxtop Whole-clad Tri-ply Premium
cookware set



Secura Hot & Cool Mist Ultrasonic
Facial Steamer

