

**SECURA®**

# **Secura Nano Ionic Facial Steamer**

## **User's Manual**

**S-199**



The latest PTC heating element creates a billowing mist of easily absorbed ionic charged steam within 40 seconds of turning the steamer on.

# SECURA®

**Copyright © 2016 – Secura Inc. - All rights are reserved.**

The material in this publication is protected under International and Federal Copyright Laws and Treaties, and as such, any unauthorized reprint or use of this material is strictly prohibited.

No part of this book may be reproduced or transmitted in any form without the written permission of the author, except for the inclusion of brief quotations in a review.

Reproduction or translation of any part of this work without the permission of the copyright holder is against the law.

## Safety precautions

To ensure proper operation of this appliance read all of the safety precautions before use. The safety precautions are provided to help you use the device in a proper and safe manner in order for you to avoid injury or property damage.

Always follow these important safety precautions.

The safety precautions are defined as follows:



### **WARNING:**

This message indicates potentially hazardous actions and situations, which, if not avoided, could result in death or serious injury.



### **CAUTION:**

This message indicates potentially hazardous actions and situations, which, if not avoided could result in personal injury or property damage.



### **WARNING!**

- Do not use this product near a full bath, sink, or any vessel containing water.
- This appliance should not be used by persons with diminished abilities to feel heat, otherwise, it may result in burns or scalding.
- Immediately stop using if you experience any pain or abnormalities on your skin or throughout your body.
- People with the following conditions should avoid using this appliance:
  - Women who are pregnant or currently in a menstrual period (may cause skin problems due to hormone imbalance).
  - Persons with allergies, skin problems, such as dermatitis, severe sunburns.
  - Person with skin injuries, eczema, swelling, etc.
  - Persons recovering after an operation.
- Avoid touching any part of the metal prongs on the plug while plugging the appliance into a power socket.
- Always turn the power off and unplug the appliance after use in order to avoid the possibility of overheating or fire.
- Clean the Facial Steamer and power cord periodically with a soft cloth to avoid any accumulation of dirt or dust which might affect its performance.
- Always ensure the appliance is operated on an electric power source matched to the rated voltage indicated on the appliance. Ensure that the plug is plugged in completely;

## Safety precautions

otherwise, it may result in fire, electric shock, burns or scalding.

- Do not use the appliance under the following conditions:
  - When the plug is loose in the power outlet.
  - Do not damage, modify, unreasonably bend, pull or twist the cord.
  - Do not place anything heavy on the cord and do not pinch the cord.
  - Do not let pins or dirt get attached to the end of the appliance plug.
- Do not plug or unplug the appliance into power outlets or use the appliance with wet hands.
- Avoid storing the appliance in rooms or areas with high humidity. Prolonged exposure to humidity may cause the insulation to fail, resulting in fire or electric shock.
- Keep away from infants.
- Do not use the appliance near flammable substances (alcohol, thinner, benzene, enamel remover, aerosol sprays, etc), otherwise, it may result in explosion or fire.
- Do not immerse the appliance in water or directly add water under water faucets. Use the water supply tank to supply water to the appliance.
- Do not continue to use this appliance if it has been dropped or damaged.
- Do not block the steam outlet as pressure might build up in the appliance, creating the possibility of an explosion.
- Do not attempt to modify, disassemble, or repair the appliance yourself. Contact your dealer or contact our customer service department at [www.thesecura.com](http://www.thesecura.com)



### CAUTION!

- When disposing of the water after use, hold the appliance so that your hands are not exposed to the hot water.
- Use only distilled water or purified water. Failure to do so may result in equipment malfunction, or in serious cases, burns or scalding.
- Keep your hands away from the steam when operating the power switch. Keep your face and hands at least 8 in./20cm from the nozzle.
  - Do not tilt, shake, or move the appliance during use or within 10 minutes after use. Doing so may cause hot water to spill out or a large volume of steam to be emitted from the steam outlet.
  - Use on a flat surface. Not for handheld use.
  - Do not attach, remove or install water supply tank during use or within 10 minutes after use. Steam continues to be emitted after the power has been cut off. Stay away from the nozzle immediately after use.

## Safety precautions

- Except when cleaning, do not shake the main unit when it contains water. Please do not drain the water through the steam outlet otherwise it may cause hot water to spray out when the power is turned on, as water droplets collect in the steam outlet. This can cause burns or scalding.

- This appliance is not intended for use by persons (including children) with reduced physical, sensory or mental capabilities, or lack of experience and knowledge, unless they are being supervised or have been given instructions concerning use of the appliance by a person responsible for their safety.

- After use, the appliance should be cleaned to avoid the accumulation of grease and other residues.

- Properly dispose of the packaging for this appliance. Keep the packaging away from infants to avoid the possibility of injury or suffocation.

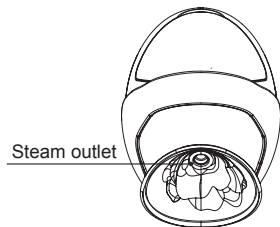
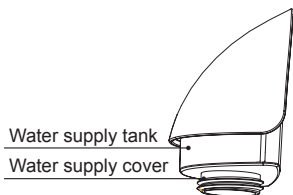
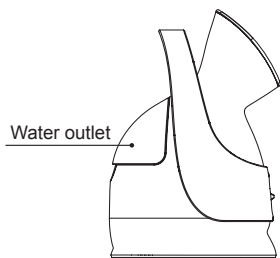
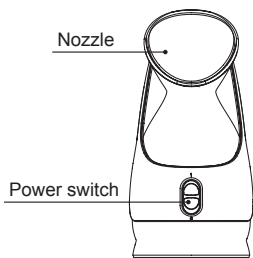
### **Warning regarding your skin**

Initially, the Facial Steamer should only be used once a day for a maximum of 10 minutes. For normal skin 2 to 3 times a week is recommended and once a week for sensitive skin.

Stop using the appliance if skin troubles occur while using the steamer.

Basic skin care is required after using this steamer. Not performing skin care after using the steamer may cause the moisture in your skin to evaporate easily, drying out your skin.

## Parts identification



## Preparation before use

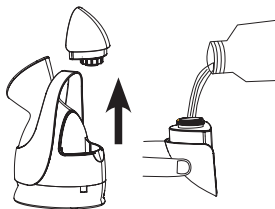
After unpacking and before using the steamer for the first time, you might notice some water around the water supply tank. That is residual water left over after the factory inspection and is normal.

1. Place the appliance on a flat, level and solid surface during use.
2. Pull the water supply tank out of the unit. Turn and open the water supply cover and fill the water supply tank with water (use only distilled water or purified water) and close the water supply cover.

The steam lasts for about 8~10 minutes.

3. Push the water supply tank into the main unit until it is flat with the main unit.

Water is supplied to the main unit and the water level in the water tank decreases after the water supply tank is attached to the main unit.



### **Use only distilled water or purified water.**

Since the service life of the appliance may shorten depending on water quality, the use of distilled water or purified water is recommended.

The following types of water cannot be used due to its high mineral content.

Tap water, Mineral water, Geothermal water, Acidulated water, Ionized alkaline water.

### **Do not mix with anything**

Do not mix the water with any other substance, such as lotion, aromatic oil, etc, otherwise, it may cause burns, malfunctions, or shorten the life of the main unit

## How to use the steamer

1. Plug the electrical plug into the power outlet.

2. Slide the power switch upwards to turn on the appliance; the steam outlet will illuminate with a blue light once the appliance turns on. The steam is released after about 40 seconds. A little bit of hot water may be sprayed out when the main unit starts emitting steam. This is not a malfunction.

3. Steam facial care

① Keep your face at least 8in./20cm away from the nozzle. To ensure that the steam covers your entire face, direct the steam to the top of your chin.

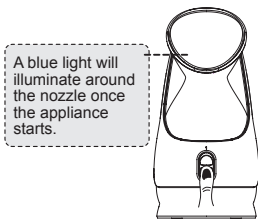
② Steam will be released about 40 seconds after turning on the appliance, the steamer releasing time is the fastest one among all the steamers.

③ When the water supply begins to run low, the amount of steam emitted will slowly diminish until it eventually stops and the blue light goes out. Turn the appliance off at this time and allow it to cool down for at least 10 minutes.

④ Special note: If the water supply tank is empty the appliance will automatically shut off for safety. Wait two minutes for the temperature controller to reset before filling the water supply tank and restarting the appliance.

4. Turn off the appliance

Slide the power switch downwards to turn off the appliance. After using the appliance take care of your skin by moisturizing with lotion, performing cleaning, etc. If you do not take care of your skin, water will evaporate from it, making it dry.





## After use

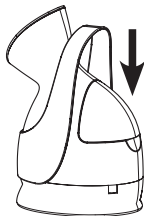
Be sure to discard any water remaining in the water tank and main unit after use. Failure to do so may cause water staining or unusual odors.

1. Let the appliance cool for at least 10 minutes.
2. Remove the power plug from the electrical outlet. Remove the water supply tank and discard the water in the water supply tank and wipe away any water on the surface of the water supply tank.
3. Discard the water from the water outlet as shown on the diagram. When disposing of water, hold the main unit so that your hands are not exposed to the hot water, otherwise it may result in burns.
4. After use, push the water supply tank back into the main unit.
5. Remove all the water in the water supply tank and main unit when not using the main unit for extended periods of time (several weeks or more). Store the main unit only after sufficiently drying.



## Cleaning

1. Fill the water supply tank with water and close the water supply cap.
2. Attach the water supply tank to the main unit, shake the appliance horizontally 3 to 4 times, shake the appliance gently without tilting it.
3. Remove the water supply tank from the main unit and discard the water in the main unit. Return the appliance to a flat position and repeat the step above 2 to 3 times.



## Cleaning and maintenance

1. Use a soft dry cloth to clean the exterior of the steamer and the power cord.
2. If the water supply cap seal detaches or becomes misaligned, use your index finger to push up the center of the water supply cap and then reattach or rotate the seal until it aligns with the opening in the water supply cap.

## Specifications and packing

### Specifications

Product name: Secura Nano Ionic Facial Steamer

Product model: S-199

Power source: 120V~60Hz

Power consumption: 280w

Steam temperature: Approx. 100°F/40°C ( at a distance of approx 8in./20cm from the edge of the nozzle)

Unit size: 5.6x4.1x8.8 in/143x105x225 mm

Unit weight: 1.10 lbs/750 gram

# SECURA®

## *Manufacturer's Limited Warranty*

The Manufacturer of the product warrants to the original purchaser of this product from an authorized reseller or distributor that this product will be free from defects in material and workmanship under normal use and service for 1 year after date of purchase, unless stated otherwise. Manufacturer will, at its option, repair or replace with new or refurbished product. The manufacturer reserves the right, before having any obligation under this limited warranty, to inspect the damaged product, and all costs of shipping the damaged product for inspection and warranty service shall be borne solely by the purchaser. If the replacement product is no longer in production Manufacturer will, at its option, replace your item with the most comparable item currently manufactured.

The manufacturer's limited warranty is valid only in accordance with the following conditions:

1. The product is purchased directly from manufacturer or an authorized reseller. The warranty is not transferable, only the original purchaser is covered by this warranty.
2. This warranty is void when the product is used in a commercial or institutional use.
3. This warranty is void if the product has been subject to misuse, abuse, negligence, unauthorized modification or repair, or accident. Normal wear and tear are not covered by this warranty.
4. Purchaser must present acceptable proof of original receipt for the product.
5. This warranty does not affect any other legal rights you may have by operation of law.

Secura Inc.  
Brookfield, Wisconsin. USA  
[www.thesecura.com](http://www.thesecura.com)

# SECURA®

Secura Inc.

Tel: 888-792-2360

CustomerCare@thesecura.com

***www.thesecura.com***

Brookfield, Wisconsin. USA

For warranty claims, please visit our website **www.thesecura.com**  
to submit a warranty claim and provide proof of purchase